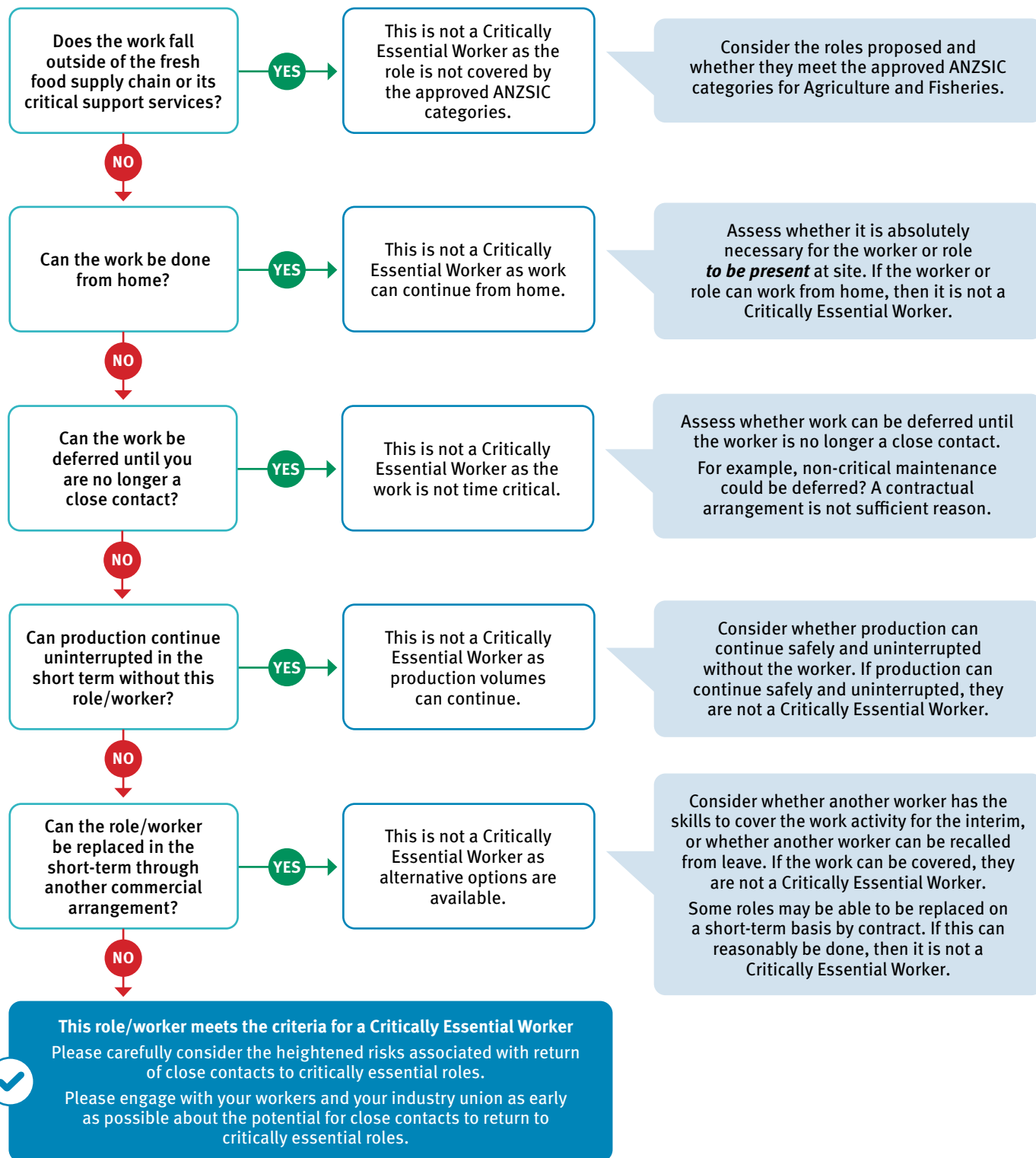


Critically essential worker flow chart for agriculture and fisheries

As at 12/01/2022

Issue

Discussion



Contact the Department of Agriculture and Fisheries

☎ 13 25 23 or ✉ info@daf.qld.gov.au

🌐 DAF's [Critically essential roles and business continuity planning](#)

🌐 [Critically essential worker requirements](#) (Queensland Health)

🌐 Direction: [Isolation for Diagnosed Cases of COVID-19 and Management of Close Contacts Direction \(No. 3\)](#)



Queensland Government